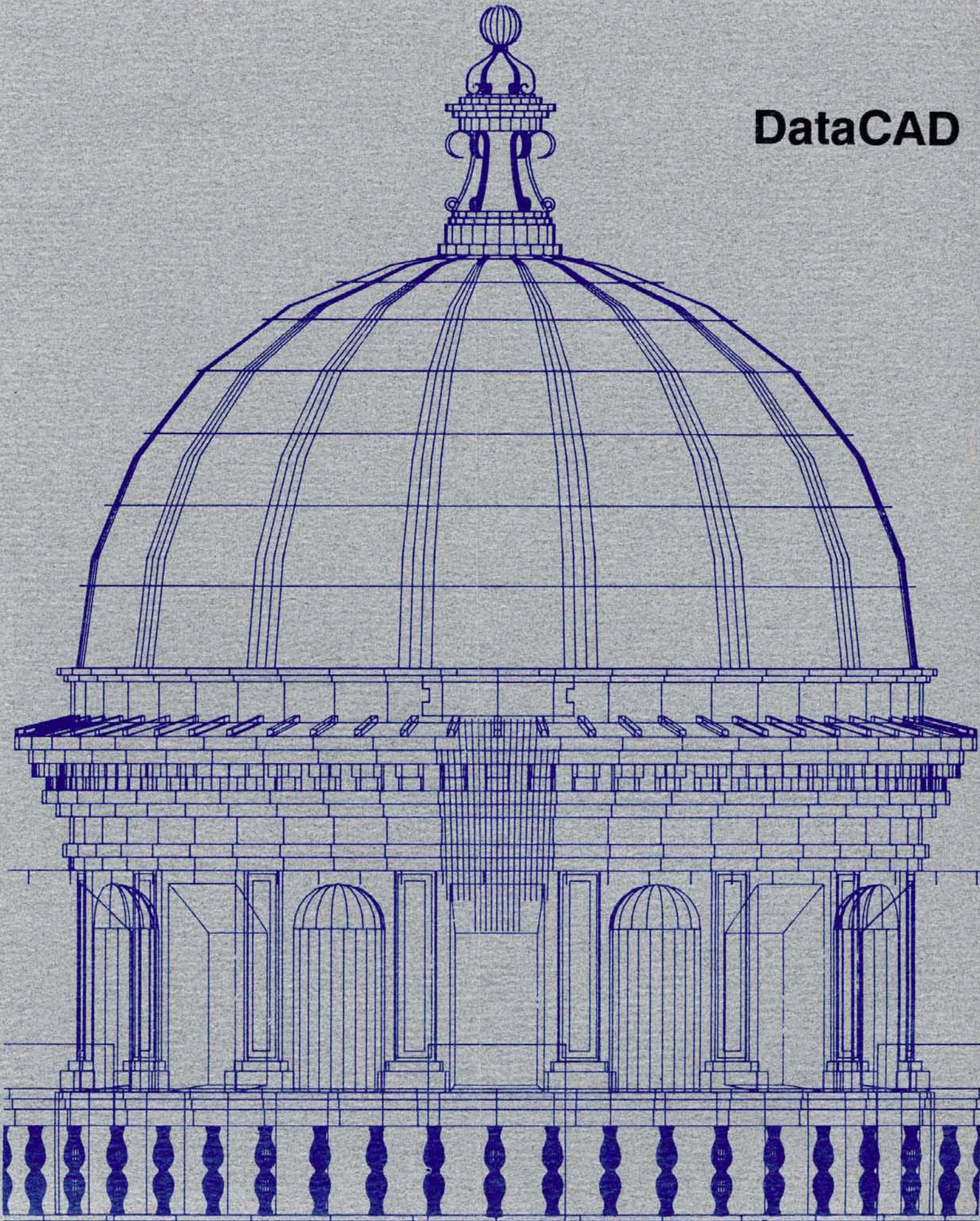
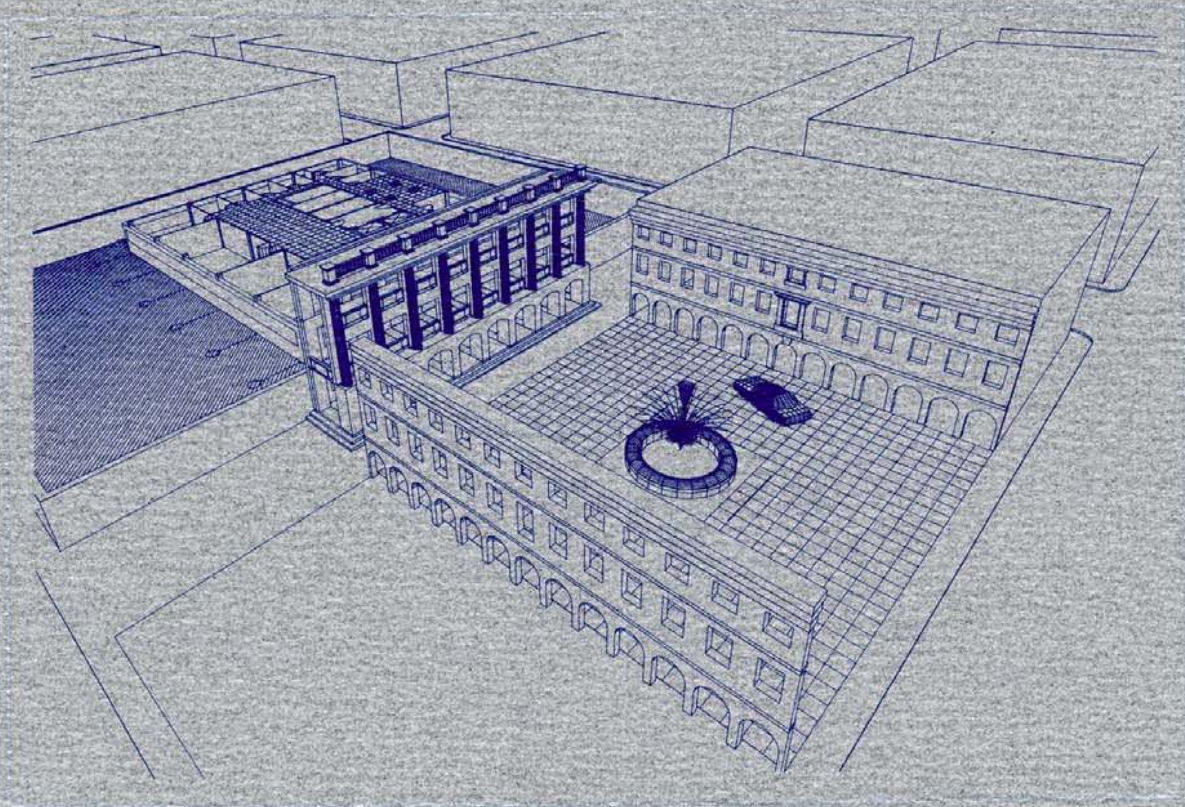


DataCAD



DataCAD

DataCAD Velocity



DATA CAD AEG

For design professionals who depend on drawing productivity for profitable service to clients.

An integrated part of DataCAD and the Microstructure family of products, this parametric designer is fast, accurate, and easy to use with tremendous productivity gains.

DataCAD AEG automatically draws building components such as:

- Windows
- Doors
- Bathroom Fixtures
- Elevators
- Stairs
- Ceiling Grids

The first photo realistic presentation renderings from your CAD drawings.

Now your client presentations come to life using DataCAD Velocity's high resolution rendering system. Assign visual attributes such as, colors, textures, and transparency to all 3D wireframe drawings created with DataCAD's DC Modeler.

Real world surface attributes like plastics, metals and glass are easily displayed, while textures like wood, marble, and brick are "mapped" onto the surfaces with smooth edges, giving your drawings a new degree of realism.

DataMERGE

*** DataMERGE ***
Cost Estimate (2)

Cost estimate

| <u>Text</u> | <u>Quant</u> | <u>Unit</u> | <u>Indiv.pr.</u> | <u>Total price</u> |
|--------------------------------------|--------------|-------------|------------------|--------------------|
| Water-Resistant Gypsum Backing Board | 200.000 | s.f. | 0.53 | 106.00 |
| Trim Accessories | 800.000 | s.f. | 0.27 | 216.00 |
| Gypsum Board | 800.000 | s.f. | 0.55 | 440.00 |
| Wood Strip Flooring | 1200.000 | s.f. | 3.79 | 4548.00 |
| Vinyl Sheet Flooring | 190.000 | s.f. | 3.30 | 627.00 |
| Carpet | 1000.000 | s.f. | 1.40 | 1400.00 |
| Toilet Accessories | 1.000 | ea. | 707.20 | 707.20 |
| Kitchen Appliances | 1.000 | ea. | 2028.00 | 2028.00 |
| <hr/> | | | | 33117.07 |

Finally . . . a direct link between:

Drawings • Costs • Specifications

DataMERGE works without exchange files to combine all the elements of building design and construction into a single, easy to manage database. Used in tandem with DataCAD, DataMERGE lets you automatically specify materials, estimate costs, compare bids, and track construction expenditures.

DataMERGE is flexible, forgiving and allows you to use MASTERSPEC, CSI, and other standard industry formats.

I'd like more information on DataCAD AEC, DataMERGE, & DataCAD Velocity.

Name:

Firm:

Address:

City:

State:

Zip:

We'll send you our product information kit. Or call us at 1-800 722-3983, for the name of the dealer nearest you. (Virginia residents; 804/295-2600)

(c) MICROTECTURE CORPORATION, 1224 W. Main St., Charlottesville, VA 22903.

" The 3D capability is tightly integrated; the user interface doesn't require a computer a computer degree; and the program provides a wonderful mix of architectural functions. "

Mick Heck

A/E Systems Magazine

" While no system has every feature you would like to see in an architectural drafting system, DataCAD from Microtecture comes awfully close. "

Eric Teicholz

Computer Graphics World

DataCAD
FOR THE ARCHITECTS OF THE WORLD

1-800-722-3938

In Virginia 1-804-295-2600

(c) MICROTECTURE CORPORATION 1988. DataCAD (r) and DataMERGE (tm) are registered trademarks of MICROTECTURE (tm), 1224 W. Main St., Charlottesville, VA 22903

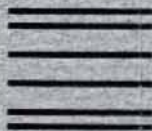
BUSINESS REPLY MAIL

First-Class Mail Permit No. 832 Charlottesville, Va.

Postage will be paid by addressee

MICROTECTURE

1224 W. Main Street
Charlottesville, VA 22903



NO POSTAGE
NECESSARY
IF MAILED
IN THE
UNITED STATES

